



BMSD-1013

Owner's Manual – LD3 Cargo Dolly

Not controlled in hard copy

Rev. 1.0

Date: 23-Aug-2023

Page 1 of 18

Owner's Manual

Container Dolly (LD3)

30-00082



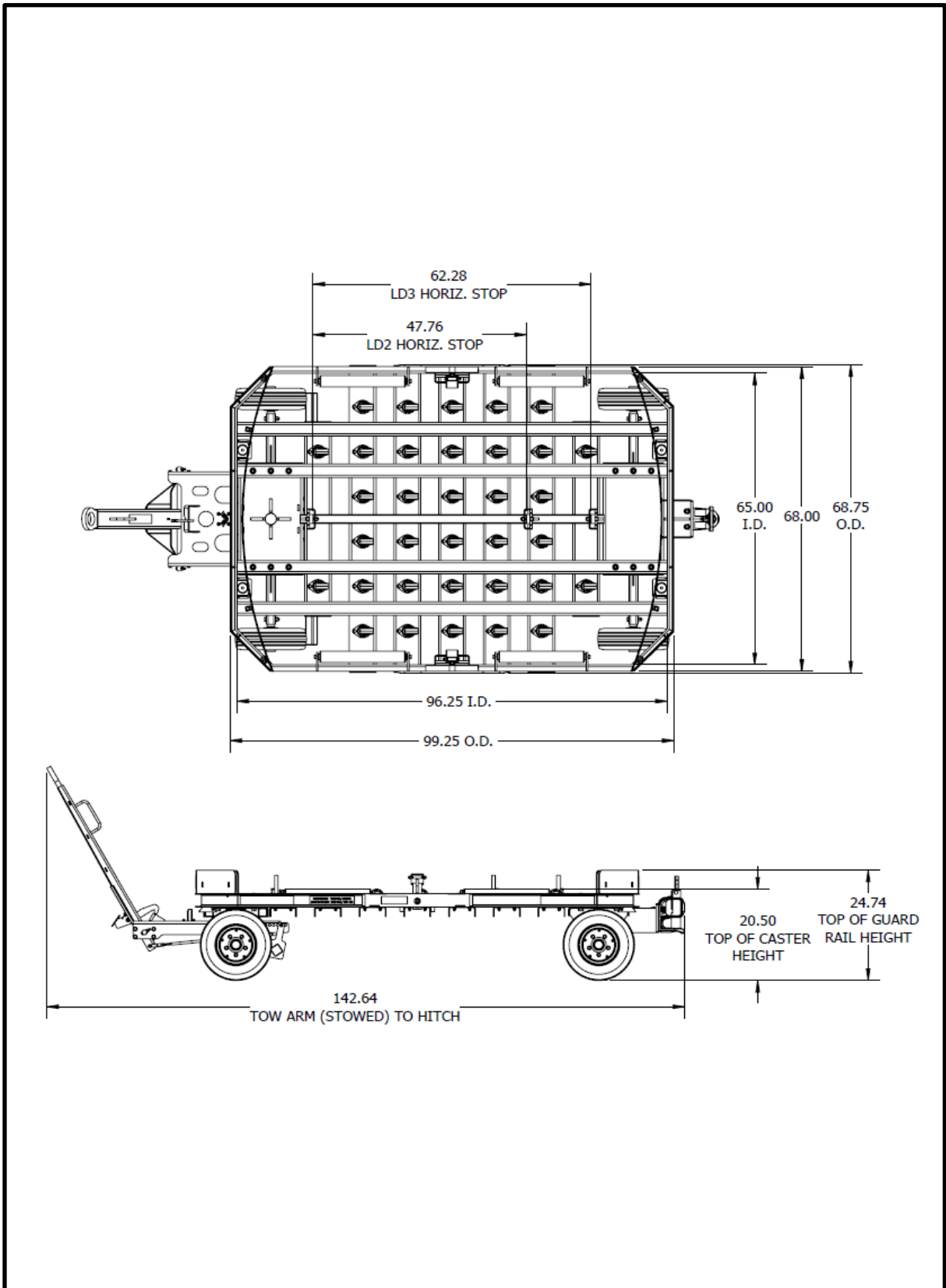
550 McGeachie Drive
Milton, Ontario Canada L9T 3Y5
TEL: 888-294-5269 FAX: 905-203-9982
www.wilcoxgse.com

Index

Specifications	3 - 4
Daily Walk Around.....	5
Operation Instructions	6
Preventative Maintenance Guidelines.....	7 - 8
Regular Preventative Maintenance Guidelines	9 - 10
Parts List	11 - 16
Limited Warranty Statement.....	17 - 18

Specifications

Overall Height.....	24.74"
Overall Width.....	68.75"
Tires.....	Solid 4.00 x 8.00
Hub Assembly	5 on 4.5 (with grease seal)
Lug Nut Torque Spec.....	100 Ft. lbs
Front Drive Wheels.....	2 Wheel Steering
Parking Brake.....	Tow Bar Actuated
Rear E-Hitch.....	PN 60198
Load Capacity.....	3500 lbs.
Cart Weight.....	1365 lbs.
Maximum Speed	12 MPH / 20 KPH
Roller Finish	Galvanized



Daily Walk Around

“Walk around” daily check-ins prior to using any Ground Support Equipment is a simple and effective way to spot potentially dangerous issues **before** equipment is used.

Daily walk around should include:

- Inspect locks and stops (replace broken locks or missing springs)
- Inspect and test brakes. When tow bar is in the lock position (up). Dolly should not move when pushed.
- Inspect front tow arm and ring (look for cracks or damage). Replace if necessary.
- Inspect tires (any flat spots, rubber peeling or cracking, rims damaged)
- Inspect all hubs and casters for missing components.
- Inspect E-Hitch for damage and operation repair if necessary.

Wilcox recommended best practice is that each unit should have its own daily check log containing the items to be checked during the daily walk around inspection. Defects recorded should be brought to the attention of the person responsible for GSE maintenance immediately. If unit fails, unit should be removed from service and repaired immediately.

Operation Instructions

- To release park brake push tow bar towards the Dolly with your foot. Push down lock peddle, lower tow bar, holding the side grab handles.
- To engage the parking brake, lift tow bar and push towards the Dolly until the tow bar lock latches. Unit is locked once tow bar is secured in its up position. NEVER leave Dolly unattended without parking brakes activated.
- Use tow bar handles to lower and connect tow bar ring into E-Hitch on Baggage Tractor, Dolly or Pintle Hitch. Confirm unit is properly connected and locked prior to towing unit. ALWAYS make sure cargo is secure prior to use. Properly position Dolly Locks for ULD being used in the up, locked and secured position.
- Tow at a maximum 20 kph/12 mph. Reduce speed when cornering or when on rough or wet surfaces. (For airside use only, not intended for highway use). When towing multiple units (**maximum 4 loaded**), reduced speeds and caution must be adhered to.
- When using the Dolly on location, confirm tow unit is stopped and park brake is set.

Do not Exceed 20 kph/12 mph

Preventative Maintenance

After the first 30 days of service, inspect all wheel nuts, fifth wheel and wheel bearings for tightness; adjust as necessary. Once completed recheck every six months to ensure proper safety.

WARNING: Before removing or installing any components, be sure the cart is on level ground with the wheels securely blocked.

Wheel Hub

Check and adjust the wheel bearings during the first few days of operation.

To tighten wheel bearings:

1. Remove dust cap.
2. Remove cotter pin from the castle nut.
3. Tighten the nut until there is a slight drag on the bearing while turning the wheel.
4. Loosen the nut one slot and re-insert the cotter pin. There should be a slight amount of drag on the bearing.
5. Replace the dust cap.

Wheel Bearing Lubrication

Pack the wheel bearings every 6 months or as needed. Use S.A.E. approved Multi-Vehicle Grease with excellent water resistance and wide range of temperatures reflecting the climate that the Cargo-Dolly will be operating in.

Parking Brake

Inspect braking system before use. Ensure that all defective parts are replaced and reported to the appropriate GSE Manager.

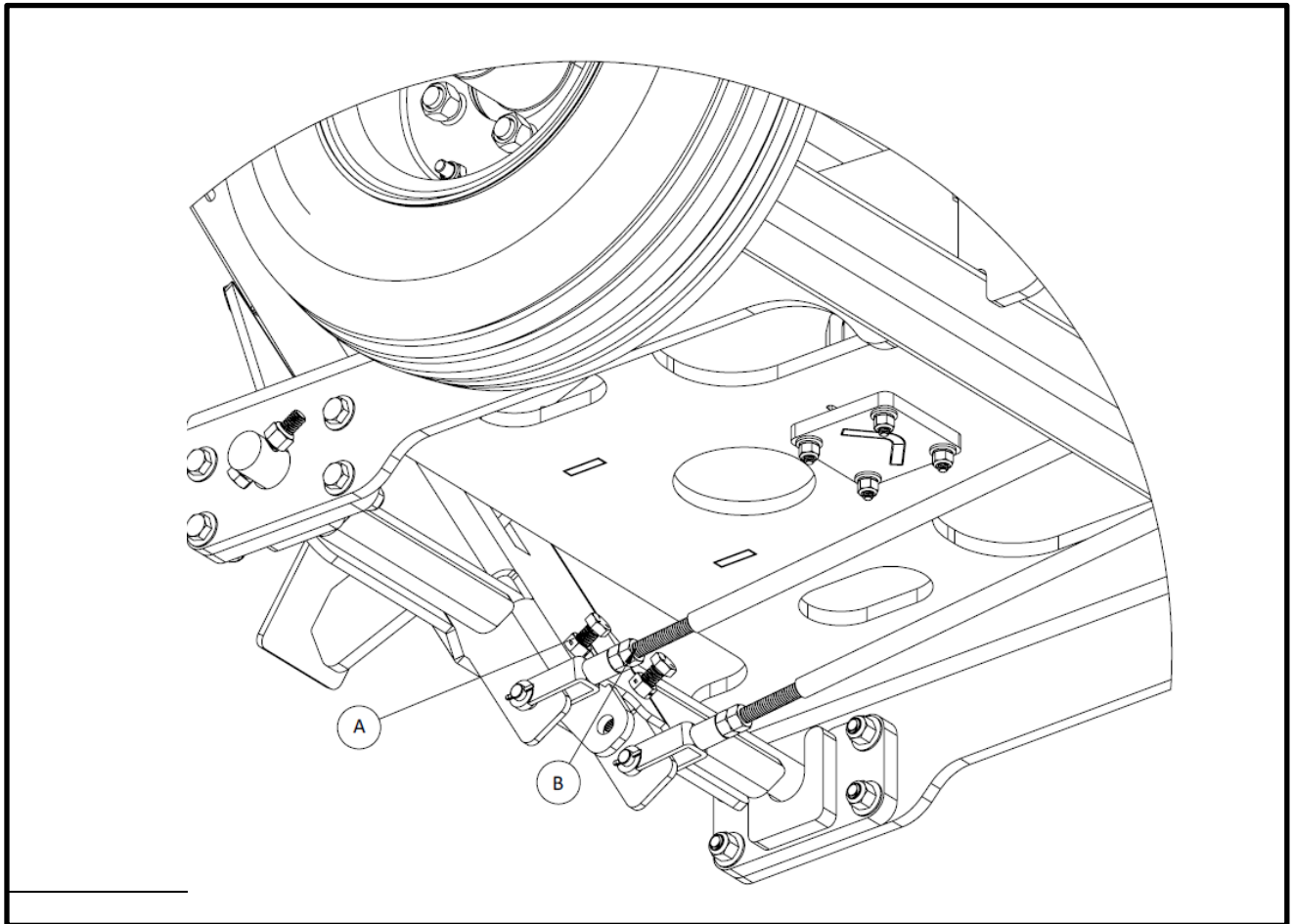
Parking Brake Adjustment

Raise the tow bar so that the bar is in the latched position. With the tow bar in the locked position, check the brake bar. The brake bar should touch both front tires.

Parking Brake Adjustment Continued

If the parking brake is not properly adjusted, adjust the brake linkage bar so that the brake bar touches the tire (Ref. Item B Below). To adjust the brake linkage bars, loosen the locknuts and adjust the threaded rod accordingly. Retighten the lock nuts against the brake rod yoke and apply red loctite. Proper adjustment of the parking brake will result in both front tires touching at the same time, in 2 locations.

To adjust the tow arm to ensure proper fitment around the E-Hitch, the vertical position can be adjusted by loosening or tightening the hex head bolts.
(Ref. Item A Below)



Tow Bar Height Adjustment

WARNING - This is a pinch point and take extra caution when adjusting Tow Bar Height

- Measure the height needed from the ground to the E-Hitch
- Chock the cart wheels, and lower the tow bar.
- Support tow bar to take pressure of adjusting bolts.
- At the base of the tow bar are two adjusting bolts with a lock nuts.
- Loosen the lock nut and adjust the bolts to the correct height.
- Tighten lock nuts.

Regular Preventative maintenance guideline for all Wilcox Ground Service Equipment

<u>LOCATION</u>	<u>MAINTENANCE RECOMMENDED</u>
Locks & hinges	Spray Krown® solution onto all dissimilar metals (aluminum and steel) to prevent corrosion e.g., hinges, locks, grab handles, etc. Krown® once before the winter and once in the spring.
Fasteners	All fasteners must be checked periodically and tightened as required.
Paint chips	Touch-up paint chips immediately to prevent corrosion/perforation of the body.
Silicone Sealant	Check, inspect and remove dirt or grit which may collect on the weather stripping. Replace any torn or damaged area with replacement silicone.
Additional equipment	Check the service manual for maintenance guidelines for any aftermarket installed equipment, e.g. E-Hitch, pallet stops, etc.
Mounting bolts	Check mounting locations monthly to ensure proper attachment of any accessories installed onto Wilcox GSE products.

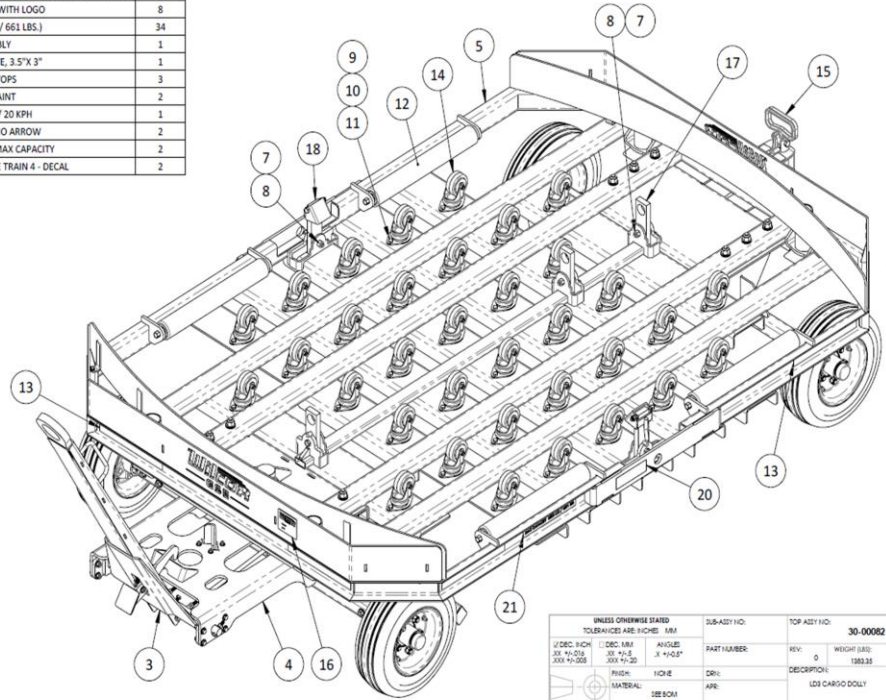
PLEASE NOTE: REGULAR MAINTENANCE MUST BE PERFORMED BY THE OWNER AT THEIR EXPENSE AND IS REQUIRED TO MAINTAIN ANY WARRANTY STATEMENTS WHICH ARE CURRENTLY IN EFFECT.

Parts List

#	QTY	Part Number	Part Name
1	2	29-00295	CONTAINER GUARD ASSEMBLY
2	1	29-00280	LD3 REAR AXLE ASSEMBLY
3	1	95225	CART TOW BAR ASSY
4	1	29-00275	LD3 FRONT AXLE ASSEMBLY
5	1	29-00160	ACCESSORIES FRAME WELDMENT
6	4	28-00946	LD3 STACKING PIPE
7	5	20070	1/2" HEX HEAD CAP SCREW
8	5	20096	1/2" NYLON INSERT LOCK NUT
9	68	21099	.375 HEX NUT – GR.8 YELLOW ZINC
10	68	21169	.375 SPLIT LOCK WASHER – GR.8 YELLOW ZINC
11	68	21177	.375 HEX CAP SCREW – GR.8 YELLOW ZINC
12	4	40063	2.5" DIA ROLLER
13	8	60098	DECAL, CONSPICUITY TAPE
14	34	60157	DOLLY CASTER
15	1	60198	E-HITCH ASSEMBLY
17	3	60500	SHORT PALLET STOPS
18	2	60616	VERTICAL RESTRAINT
19	1	60866	DECAL, MAX SPEED – 12MPH/20KPH
20	2	60926	DECAL, PINCH POINT
21	2	61153	DECAL, TARE WEIGHT
22	2	61153	DECAL, MAX TOW TRAIN 4
23	1	61141	STEERING SPINDLE 2.5" DIA – 1"-14 THREAD
24	1	20134	SPINDLE WASHER–1" ID / 1.67" OD
25	1	20017	STEERING SPINDLE COTTER PIN – 1/8 X 2"
26	1	20009	STEERING SPINDLE CASTLE NUT – 1"-14
27	1	60302	STEERING HUB – 6 ON 5.5 BC IDLER
28	4	60304	WHEEL HUB – 5.00 X 4.5
29	4	60980	WHEEL-SOLID TIRE 4.00 X 8
30	4	60508	SPINDLE – SINGLE END SHORT, 10.15"L X1.62" DIA. INCLUDES CASTLE NUT AND WASHER
31	4	60074	CLEVIS ROD END – 3/8-16 THREAD
32	4	20137	HEX NUT, 3/8-16, 18-8 SS
33	2	95208	THREADED ROD ASSY – 3/8-16" X 23.75"L

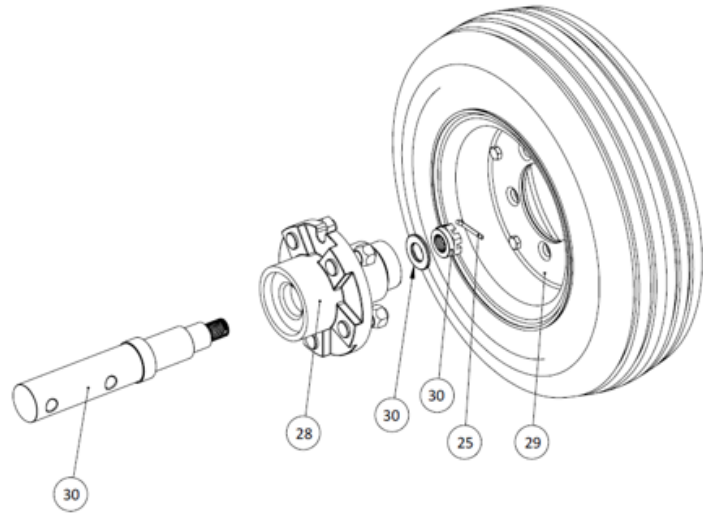
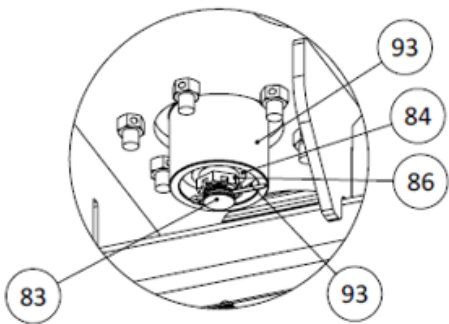
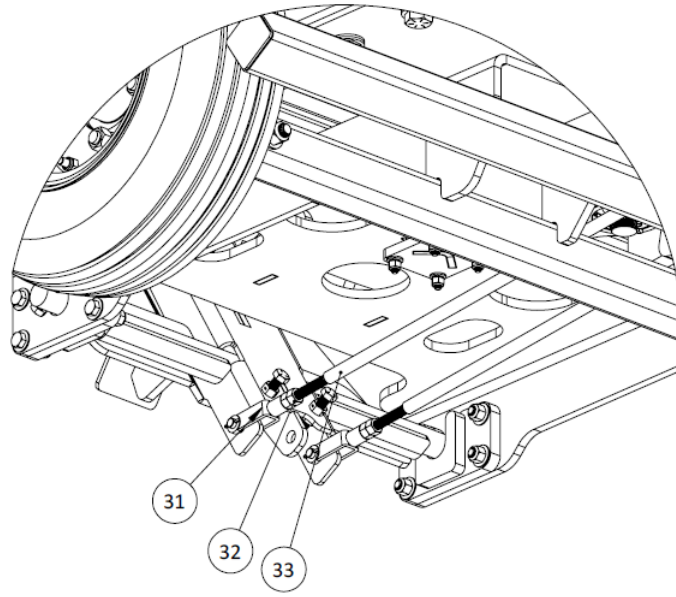
#	PART NUMBER	MATERIAL-MFG	DESCRIPTION	QTY.
1	29-00295	SEE BOM	LD3 - CONTAINER GUARD ASSEMBLY	2
2	29-00280	SEE BOM	LD3 - REAR AXLE ASSEMBLY	1
3	29-00278	SEE BOM	CART TOW BAR ASSY	1
4	29-00275	SEE BOM	LD3 - FRONT AXLE ASSY	1
5	29-00160	SEE BOM	ACCESSORIES FRAME WELDMENT	1
6	28-00946	SP 1.5 SCH40, 1.90D, 1.61ID-A500-C-95060	LD3 STACKING PIPE	4
7	20070		1/2"-13X2 1/2" GR. 5 HEX CAP SCREW	5
8	20096		1/2"-13 NYLON INSERT LOCK NUT	5
9	21099		0.375-16 HEX NUT, GR8 YELLOW ZINC	68
10	21169		0.375X0.680 OD SPLIT LOCK WASHER, YELLOW ZINC	68
11	21177		0.375-16X1 HEX CAP SCREW, GR8 YELLOW ZINC	68
12	40063		40063-R1, ROLLER, 2.5 DIAMETER, 21.75 LENGTH, 14 GAUGE (2514HS-21-SL)	4
13	60098		DECAL REFLECTIVE RED WITH LOGO	8
14	60157		DOLLY CASTER (300 KG / 661 LBS.)	34
15	60198		E-HITCH ASSEMBLY	1
16	60310		LAMACOID SERIAL PLATE, 3.5"X 3"	1
17	60500		SHORT PALLET STOPS	3
18	60616		VERTICAL RESTRAINT	2
19	60866		MAX SPEED 12 MPH / 20 KPH	1
20	60926		DECAL, PINCH POINT, NO ARROW	2
21	61153		LD3 - TARE WEIGHT AND MAX CAPACITY	2
22	61154		MAXIMUM LOADED TOWABLE TRAIN 4 - DECAL	2

REVISIONS				
ECN	REV.	DESCRIPTION	DATE	BY
	0	INITIAL RELEASE	12/28/2022	M.B.



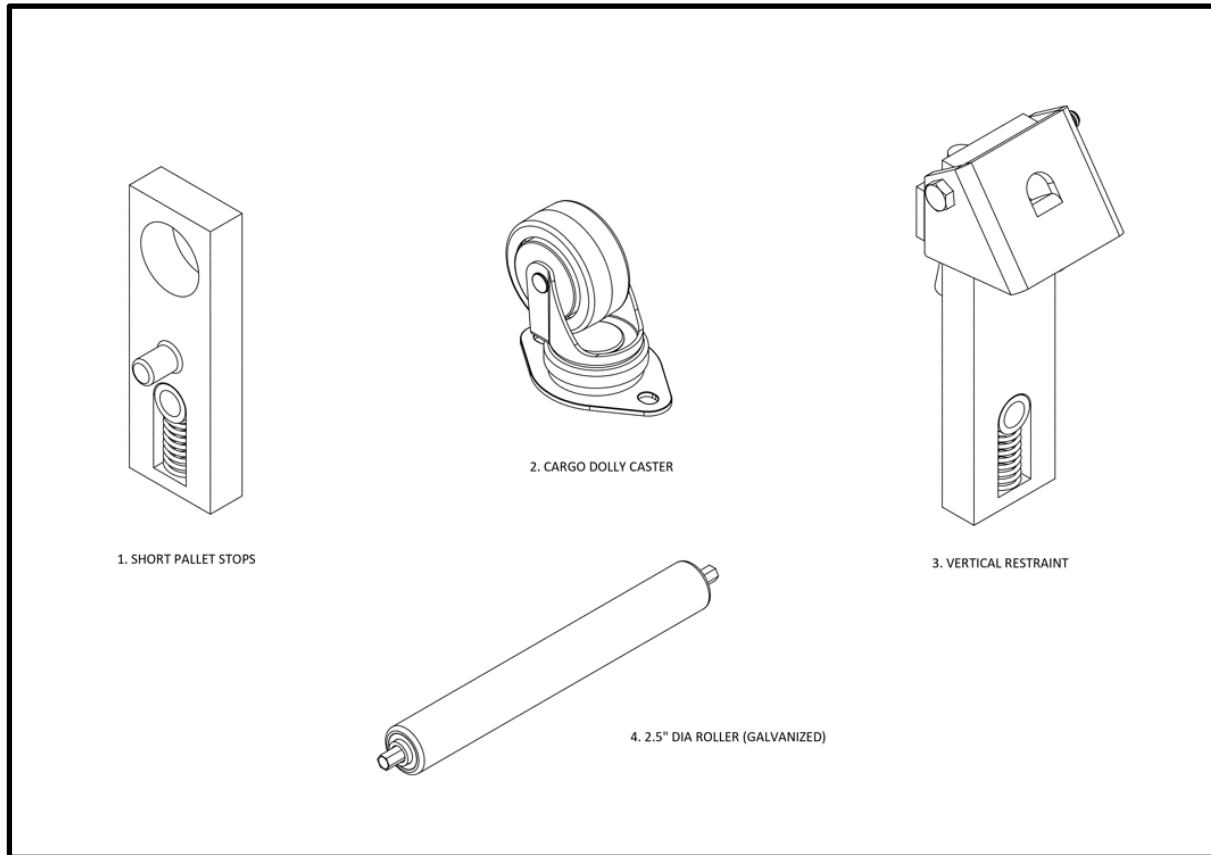
UNLESS OTHERWISE STATED TOLERANCES ARE: DIM: MM		SUB-ASSEMBLY NO.	TOP ASSEMBLY NO.	30-00002
1/ DEC: INCH 2X 1/4-20 3X 1/2-20	1 DEC: MM XX +/- .5 XX +/- .25	ANGLE: XX +/- .5 XX +/- .25	PART NUMBER:	REV: 0
			DR:	WEIGHT (LBS): 1383.35
			APR:	DESCRIPTION: LD3 CARGO DOLLY
				SIZE: 6
				SCALE: 1:16
				SHEET 1 OF 8

MFG: 60675



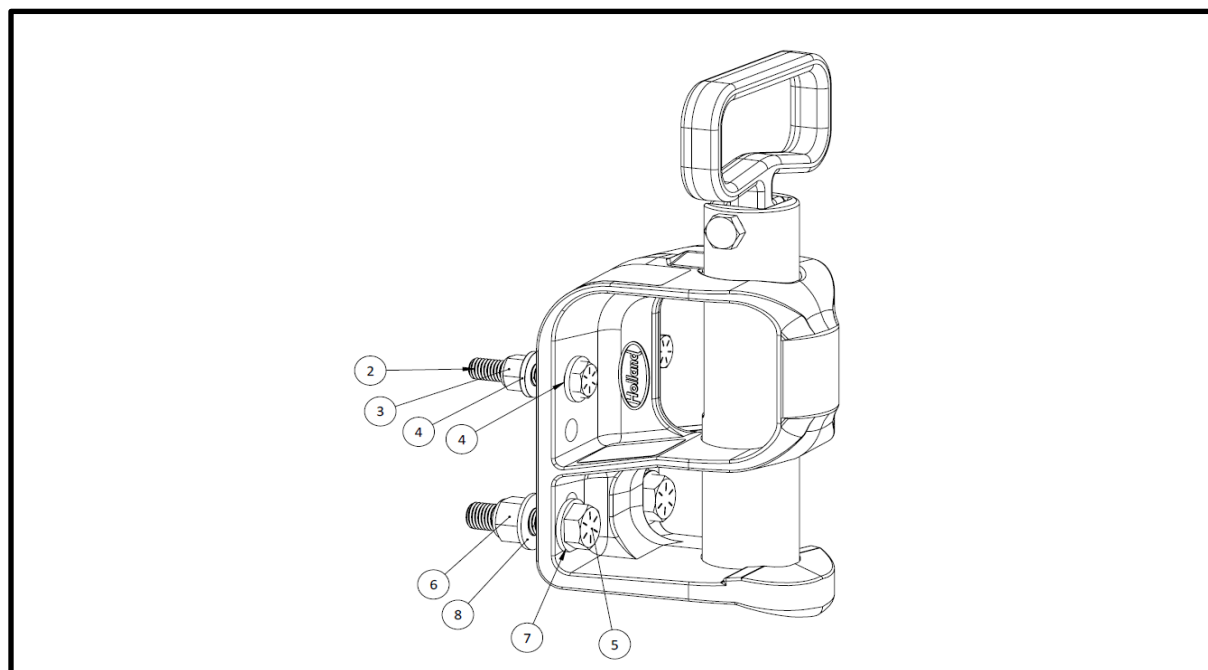
Locks, Rollers, and Casters

#	Part Number	Part Name
1	60500	SHORT PALLET STOP
2	60157	CASTER
3	60616	VERTICAL RESTRAINT
4	40063	SIDE SPRING LOADED ROLLER



E-Hitch

#	Part Number	Part Name
1	60198	E-HITCH
2	20065	1/2"-13 X 2.5" GRADE 8 HEX HEAD BOLT – YELLOW ZINC
3	20095	1/2-13 GRADE 8 NYLON INSERT LOCK NUT – YELLOW ZINC
4	20042	1/2" FLAT WASHER, GR.8 YELLOW ZINC
5	20068	5/8"-11 X 2.50" HEX BOLT GR.8 YELLOW ZINC
6	20104	5/8"-11 GRADE 8 NYLON INSERT LOCK NUT – YELLOW ZINC
7	*SEE NOTE*	SAF HOLLAND HARDENED CLIPPED FLAT WASHER (INCLUDED IN SAF HOLLAND LOOSE PARTS KIT)
8	20041	5/8" X 1.312 FLAT WASHER GR.8 YELLOW ZINC

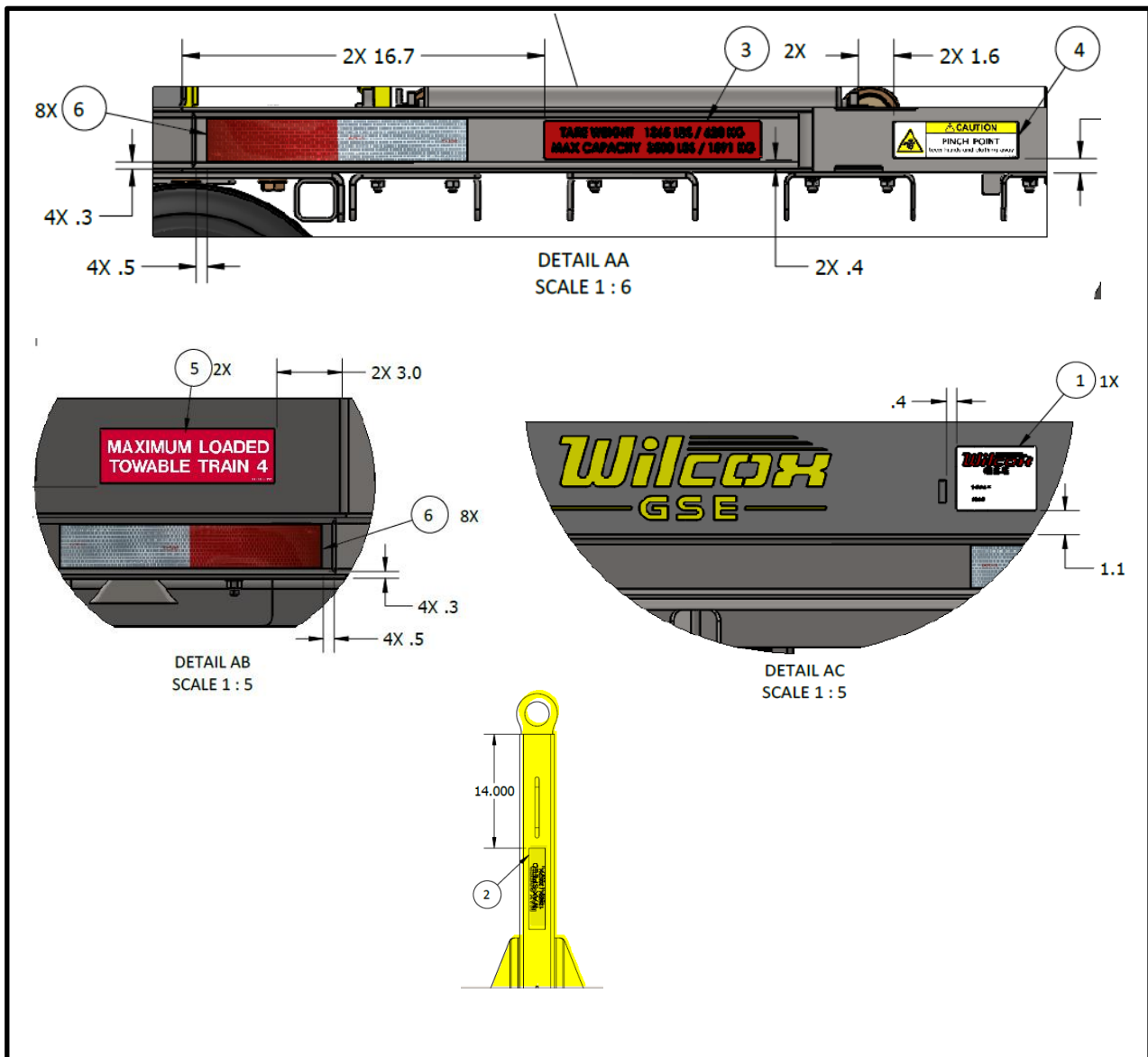


NOTE:

Rating 50,000 lbs. (22,680 Kg) [Figure 4] Use two (2) 5/8" Grade 8 bolts with supplied hardened clipped washers (clipped edge facing down) in lower holes. Torque 5/8" bolts (clean and dry) to 180 ft.-lbs (245 N*m) minimum. Use two (2) 1/2" Grade 8 bolts with supplied hardened flat washers in upper holes. Torque 1/2" bolts (clean and dry) to 100 ft.-lbs (135 N*m) minimum. Nuts used MUST be ASTM grade "C" or better

Logos and Labels

#	Part Number	Part Name
1	61203	WILCOX GSE SERIAL NUMBER
2	60866	DECAL, MAX SPEED
3	61153	DECAL, TARE WEIGHT
4	60926	DECAL, PINCH POINT
5	61154	DECAL, MAX TOW TRAIN 4
6	60098	CONSPICUITY TAPE – 2” RED/SILVER



LIMITED WARRANTY STATEMENT

Wilcox GSE Warranty Terms for Custom Manufactured Products:

At Wilcox GSE, we stand behind the quality of our custom manufactured products. Our warranty ensures that your equipment is free from defects in material and workmanship when used and maintained properly. Here are the key details:

1. **Warranty Period:** Our warranty covers a period of one (1) year from the earliest recorded date on the original customer invoice or the product release form.
2. **Repair and Replacement:** In case of any defects covered by the warranty, Wilcox GSE will repair or replace the affected part or component, at our discretion. Simply notify our after-sales service personnel within 14 days of the occurrence.
3. **Warranty Claim Process:** Follow our established warranty claim procedure by contacting Wilcox GSE service personnel before submitting a claim. Obtain a Return Goods Authorization (RGA) number for any suspected warranty parts. Remember, unauthorized returns will not be considered for warranty coverage.
4. **Service Providers:** Warranty service can be performed by any authorized Wilcox GSE new equipment distributor, recognized service center, or our own factory in the case of a direct sale. Make sure to provide evidence of the original product's delivery date when requesting warranty service.
5. **Exclusions:** The warranty does not cover normal wear and tear, depreciation, damage caused by accidents, untrained operators, improper use, or modifications not approved in writing by Wilcox GSE. Routine maintenance, as specified in our instructions, is the owner's responsibility.
6. **Limitations:** Wilcox GSE and its authorized dealers and service providers shall not be liable for business interruptions, costs of delay, or any special, indirect, incidental, or consequential costs or damages. Additionally, warranty coverage for products purchased from outside vendors will be subject to the respective manufacturer's warranty.
7. **Changes and Transferability:** Wilcox GSE reserves the right to make design changes or improvements without imposing them on previously manufactured products. This warranty applies only to the original owner and is not transferable without prior written permission from Wilcox GSE.

Claim Procedure:

- Claims for defective products must be made within ONE year from invoice date.
- Claims for missing parts must be made within 60 calendar days after the product is received
- We reserve the right to specify that items be returned to the original warehouse for inspection or be inspected by our representative in the field
- Pictures are required to claim defective products, along with a copy of the original invoice
- If the claim is justified, the item(s) or part(s) will be repaired or replaced or a credit will be issued.
- It is our policy to replace parts whenever possible

Please note that this warranty replaces all other warranties, expressed or implied, including any warranty of merchantability or fitness for a particular purpose. Wilcox GSE is not responsible for incidental or consequential damages.

For further information or clarification, please contact Wilcox GSE at the provided address. We appreciate your trust in our products and are committed to ensuring your satisfaction.

550 McGeachie Drive
Milton, Ontario Canada L9T 3Y5
TEL: 888-294-5269 FAX: 905-203-9982
www.wilcoxgse.com